

# Product Launch



## Form Talysurf<sup>®</sup> LASER

We are proud to launch the new Form Talysurf<sup>®</sup> LASER - April 2020

This product has been developed to meet the increasing needs of bearings manufacturers.

The system will be positioned between the PGI NOVUS and i-Series PRO in both performance and price.

The Form Talysurf<sup>®</sup> LASER meets the increasing demand from our customers and sales teams, boasting class-leading specifications, powered by our new industry-leading Metrology 4.0 software.



“ Customers have requested Taylor Hobson introduce a lower-cost, less precision-oriented instrument while maintaining Taylor Hobson's reputation for providing high-quality products ”

## Launch plan

Individual country conference calls will be scheduled by James Porter in the coming weeks. The calls will showcase Metrology 4.0 software with a live demonstration of the following features:

- Full instrument specification
- Competition overview
- TH Product comparison
- Typical applications
- Product accessories
- Offline programming
- One-hit calibrator
- Pallet of parts
- SMART Move
- Media messages
- New Metrology 4.0 analysis features
- Surface finish results at faster speeds
- Quick parameter study
- Quick pre-processing
- Batch analysis studies

### Gauge Range

10

Fully calibrated - 10 mm  
Resolution - 1.6 nm

### Noise



Rz  
< 30 nm

### Bias



Bias options  
Dual or single

### Software



Powered by  
Metrology 4.0

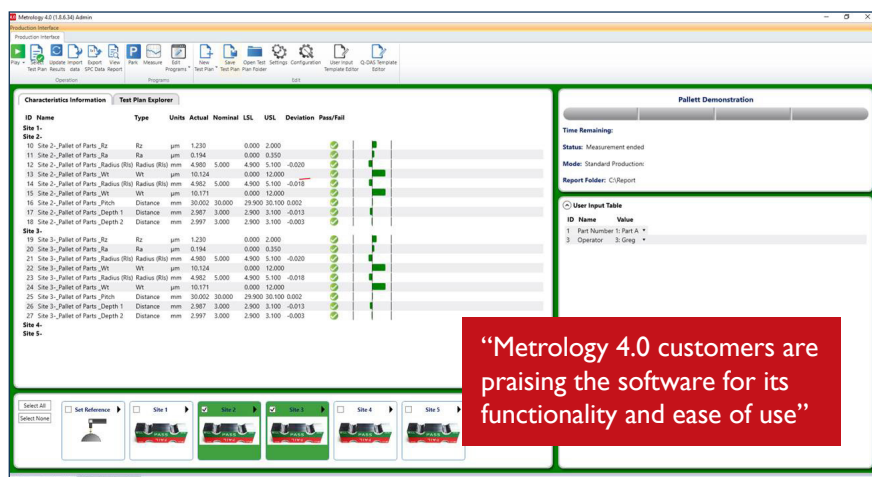
powered by



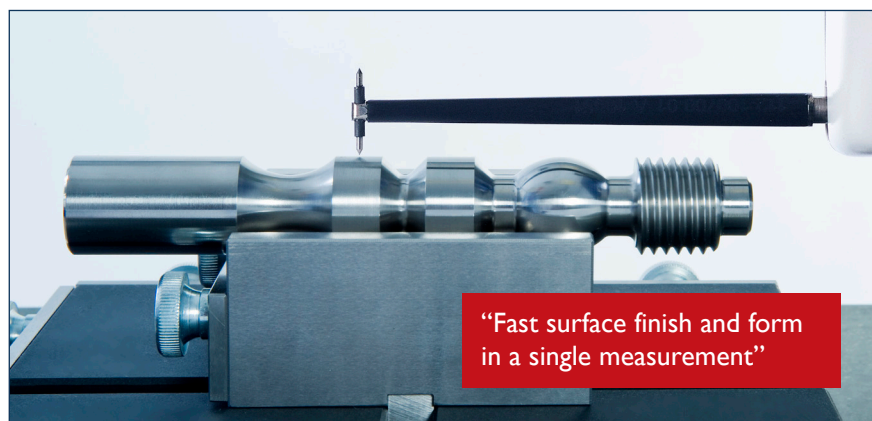
Metrology 4.0<sup>®</sup>  
SMART SOFTWARE



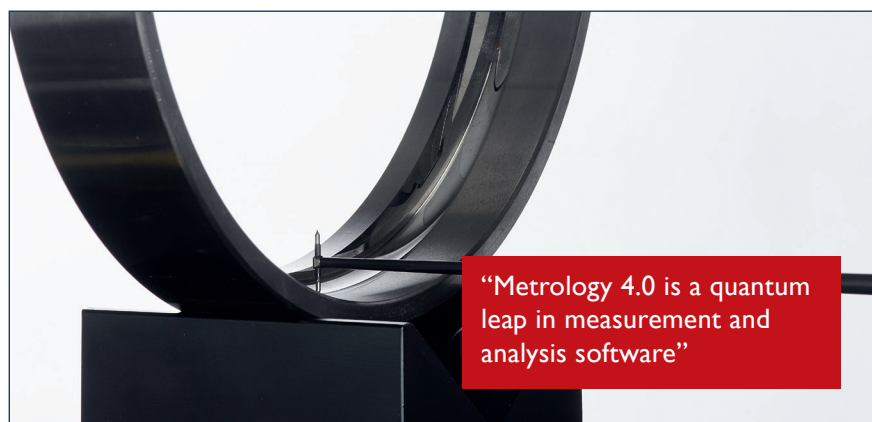
## Industry-leading software The future of modern manufacturing



“Metrology 4.0 customers are praising the software for its functionality and ease of use”



“Fast surface finish and form in a single measurement”



“Metrology 4.0 is a quantum leap in measurement and analysis software”


### Cutting-edge technology


Taylor Hobson's new advanced software enables dimensioning in accordance with part drawings and provides an exact reflection of the Part Co-ordinate System (PCS) delivering the final link in the manufacturing loop.


Metrology 4.0 software is easy to use with an intuitive user-interface, virtual display and real time control. The state-of-the-art point and move axis control function (SMART Move) delivers precise positioning and accurate measurement.


With one button click Metrology 4.0 can measure and analyse, giving a comprehensive analysis layout that includes tolerances and tabulated results.

### Operator benefits

 **Virtual display** - simulation of the measurement process with 'at-a-glance' status, on-screen indicators, real-time feedback and remote system control.

 **SMART Move** - intuitive operation for moving and measuring. Once a part has been set-up, the user can then zoom to a detail that the eye cannot see and program around the virtual part.

 **Variable programming** - enables users to automate measurements of a multitude of part sizes without the need for a multitude of programs.

 **Media messages** - Include text, images and videos as operator prompts during programs.